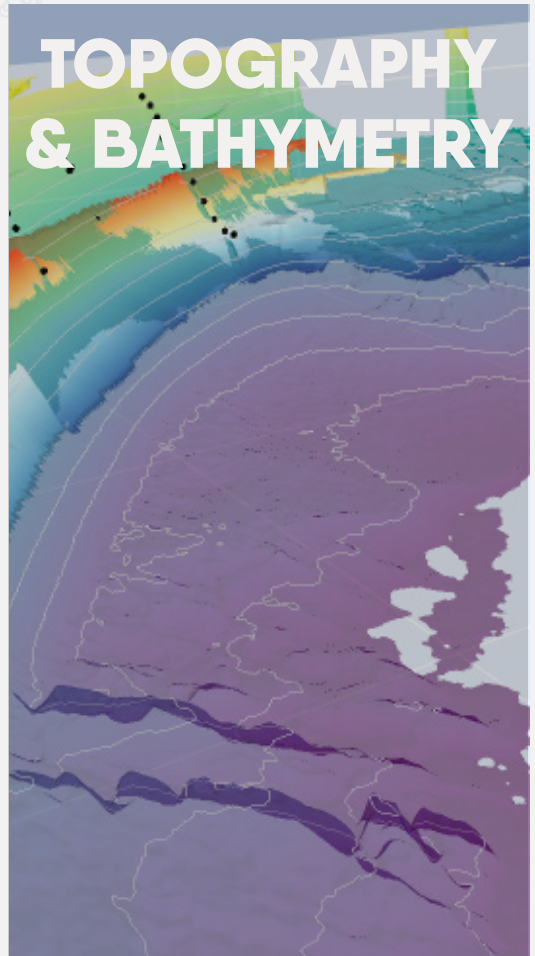




**WAVES'N SEE**

WaveCams® system allows to monitor the morphological evolution of an entire beach. Cameras follow hydro-sediment movements from the beach top to shallow waters by filming the surf-zone. The images are processed and analyzed to build bathymetry and beach-top topography profiles.



## Deliverables

- Digital Elevation Models (DEM)
- Isobaths

## Indicators

- Beach profile and slope, date-related available beach width
- Sediment budget evolution and identification of critical deficit threshold
- Bathymetric differences

## Your needs

- Anticipate beach management operations (nourishments, maintenance, development works, etc.)
- Characterize the impact of storm events on topography
- Follow protection works and structures efficiency
- Prevent wave overtopping risks